



GRASS CEILING

European Policy Forum

for women-led innovation in
agriculture and rural areas

prioritising policy recommendations

26th November 2024



Agenda

- **Overview of GRASS CEILING's work in policy**
 - **Progress of the European Policy Forum (EPF) for women-led innovation in agriculture and rural areas**
 - **Influencing the EU political landscape- the frame for action**
- **Key policy insights and ideas**
 - **Collaborative prioritisation of recommendations (working groups)**
- **Recap and closing**



EPF responsables



copa*cogeca
european farmers european agri-cooperatives



Project contributors:




copa*cogeca
european farmers european agri-cooperatives




GRASS CEILING Living Labs

Task & duration

6.4 – Setting up and coordinating the **European Policy Forum for women-led innovation in agriculture and rural areas** for social learning and showcasing women-led innovation.


 **December 23 - December 25**

5.1 – To **develop recommendations** how to include women in policies that promote the agricultural transition and future of rural areas at EU and national level

 **June 24 - June 25**

5.2 – To **design tools that check & monitor the inclusion of women innovators**. The policy toolbox will include:

- 1. gender proofing template to check the inclusiveness and responsiveness of policies in supporting women-led innovation (SETU)
- 2. template and training webinar for gender benchmarking farm & rural policy (SETU)
- 3. list of data needed on women innovators (AEIDL)

 **December 24 - December 25**

Complementary tasks

Task 1.2 – Review of mega-trends

Task 1.3 – Foresight on the future of women-led innovation in agriculture and rural areas

Task 2.1 – Rapid appraisal of existing studies into the gender specificity of women's innovation and experience of gender norms in agricultural and rural development

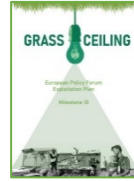
Task 4.2 – Benchmarking policies: Green Deal, Farm to Fork, CAP, LTVRA

Task 4.3 – Benchmarking legal frameworks for land transfer across Europe

EPF Progress

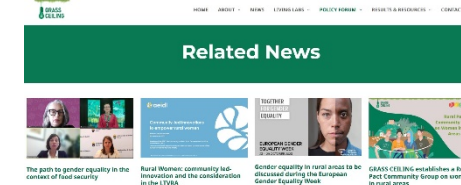


GROUP Women in Rural Areas



Stay connected with the Forum!

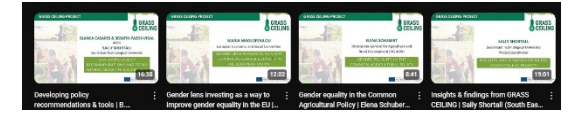
Sign up here



Web space & consent form



EPF launching session



Inception report



Support foresight exercise



Workplan European Policy Forum

March 23

Rural Pact Community Group on Women in rural areas

June 23

1st showcase event

Sep 23

Forum exploitation plan

Nov 23

Updated Workplan

March 24

Web space & consent form

April 24

Oct 24

Nov 24

Stakeholder mapping:

approx. 200 contacts identified representing wide range of expertise

Networking and coordination with other projects, initiatives & networks

Participation and presentation in specific external events

Interviews and collection of expert insights



Funded by the European Union

GRASS CEILING – Showcase – Consortium Vilnius 2024

SIGN UP TO THE FORUM



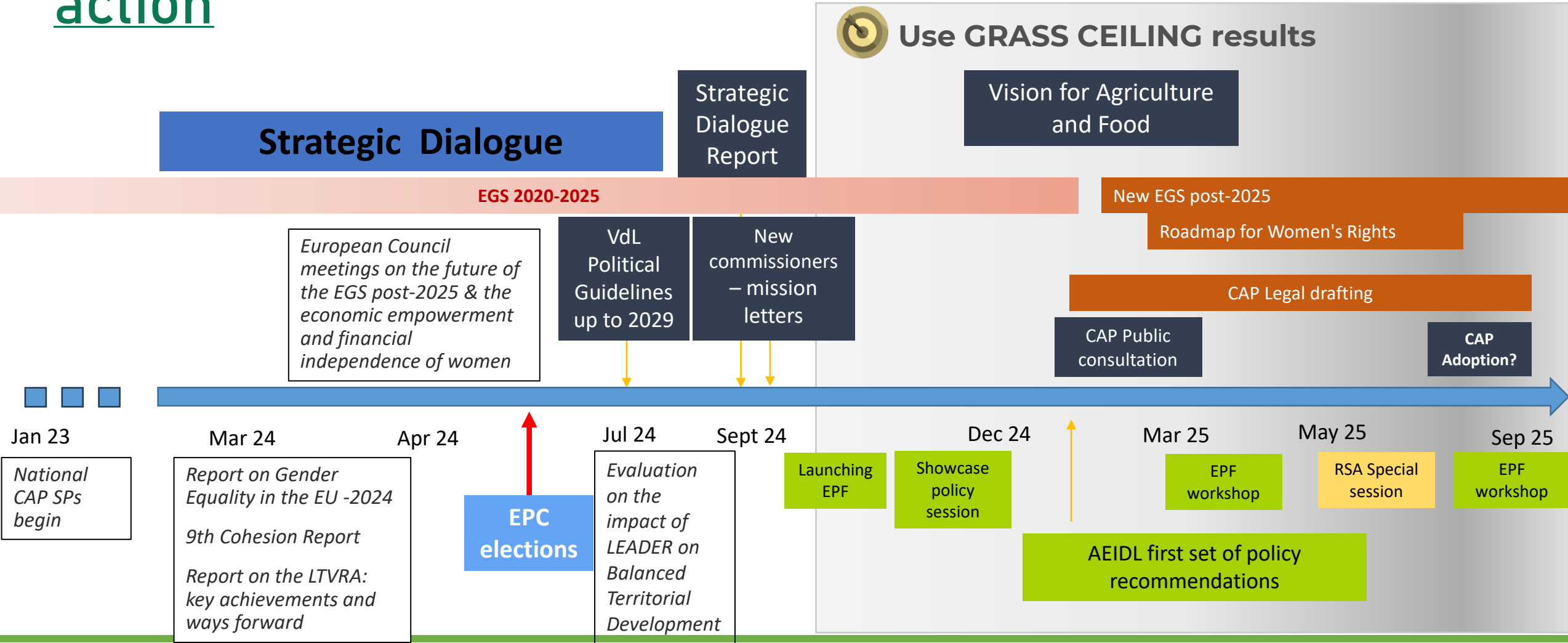
CONTACT US



00370 686 88888

info@grassceiling.eu

Influencing the EU political landscape: frame for action



Jan 23
National CAP SPs begin

Mar 24
Report on Gender Equality in the EU -2024
9th Cohesion Report
Report on the LTVRA: key achievements and ways forward

Apr 24
EPC elections

Jul 24
Evaluation on the impact of LEADER on Balanced Territorial Development

Sept 24
Launching EPF

Showcase policy session

Dec 24
AEIDL first set of policy recommendations

Mar 25
EPF workshop

May 25
RSA Special session

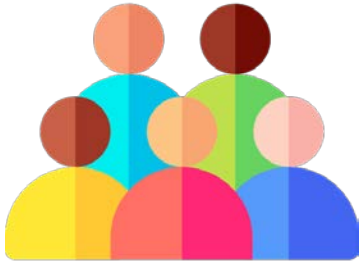
Sep 25
EPF workshop



Funded by the European Union

GRASS CEILING – Showcase – Consortium Vilnius 2024

Collaborative prioritisation of policy recommendations



Working in groups



25 min

Based on your experience, knowledge and what has been presented so far:

1. What are the **five main recommendations** we should focus on for our project's policy efforts?
2. What are the key **challenges or gaps** that could hinder the feasibility of this recommendation?
3. What **factors could contribute to the successful** implementation of this recommendation?



Funded by the
European Union

GRASS CEILING – Showcase – Consortium Vilnius 2024

Grassroots political ideas

- **Intersectionality in policy design, implementation and evaluation**
- **Place-sensitive policies**
- **Address urban-rural disparities. EU Rural areas services and infrastructure**
- **EU's leadership role in advancing global gender equality**
- **Dialogue and collaboration between rural women and women in diverse contexts**
- **EU innovation funding and platforms for exchange**
- **Enhance equality, diversity, and inclusion (EDI) practices**



Pre-prioritisation of main issues to formulate recommendations

Cultural norms and stereotypes

Care role/responsibilities; family role; leadership role; community role; behavioural expectations; employment barriers; equal opportunities

Gender in the existing legal framework

Intersectionality in policy design (and implementation and evaluation); gender-specific objectives; gender-neutral language in policy documents; gender sensitive approaches; integral rural development policies; parental leave regulations; land tenure regulations; just transition

Data gaps and lack of disaggregated data

Data collection; track expenditures related to gender equality; mechanisms for conducting gender-based assessments; CAP evaluation of successful practices across various European plans; foresight

Structural and financial needs

Equal pay, pay gaps; pension gaps; budget allocation for measures targeted at women; female entrepreneurship programmes offering financial support; tax incentives; access to start-up loans; social security

Female representation in decision-making

Women's leadership and participation in agricultural organisations and networks; women in governance bodies

Land and other resources access and ownership

Legal barriers, land inheritance regulations, farm ownership/managed by women, access to CAP payments based on farm ownership, shared ownership of the farm

Women-led rural innovation added value

Recognition; market access; social innovation; green/sustainable practices; scale of business; competitiveness; community resilience and inclusive growth

Training and mentoring support for women

Adapted/targeted advisory services; support networks; skill-building programmes; women-only knowledge transfer (KT) group; AKIS

Digitalisation and connectivity

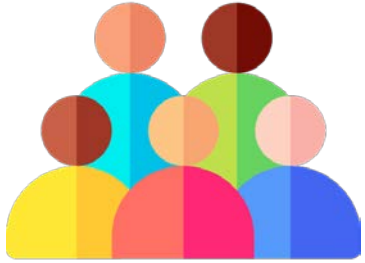
Digital inclusion; digital skills; digital infrastructure deployment; access to high-cost technology; gender-tailored digital literacy programmes; under-representation of women in STEM

Generational renewal, involvement of young women

Community support networks; new opportunities, services and infrastructure; special support programmes for young people; recognition of the agricultural profession and the rural life



Collaborative prioritisation of recommendations



Groups facilitated by

- Sally
- Bettina
- Branwen
- Charlene
- Francesca
- Blanca

Based on your experience, knowledge and what has been presented so far:

TOP 5 What are the five main recommendations we should focus on for our project's policy efforts?	BARRIERS What are the key challenges or gaps that could hinder the feasibility of this recommendation?	DRIVERS What factors could contribute to the successful implementation of this recommendation?
Recommendation 1		
Recommendation 2		
Recommendation 3		
Recommendation 4		
Recommendation 5		



25 min



Funded by the
European Union

Recap and closing

- **Analysis and use of collaborative prioritisation of recommendations**
 - One person from each group sends Blanca Casares the completed table. You can give it to me now or if you want to work on it further, you can do it by email (bca@aeidl.eu)
 - AEIDL will analyse inputs from partners and results from groups today and share results within the Consortium at the beginning of 2025
- **First set of policy recommendations:**
 - **Seeking influence to DG AGRI; Vision for agriculture & food; CAP consultation**
 - **Seeking influence to the Roadmap women's rights and EGS 25**
- Please inform at any time if you are aware of **any national-level policy opportunities** that we could leverage to raise awareness of our recommendations or coordinate efforts to influence that process. Please write to me via (bca@aeidl.eu)
- **Develop a Proposal for Data Collection on Women Innovators for the Rural Observatory**
- **Organisation of EPF workshops**
 - Sprint 2025
 - After summer 2025
- **Organisation RSA special session on Exploring Gender Equality in Policy Regional and Rural Perspectives**

- Do not hesitate to **contact us** for proposals for joint work, doubts, suggestions, etc.
(Blanca Casares - bca@aeidl.eu; Branwen Miles - branwen.miles@copacogeca.eu)
- If you want to **become a member of the EPF** (be informed and participate in the activities) please fill in the consent form on our website: https://ec.europa.eu/eusurvey/runner/GRASSCEILING_Forum
- If you want to **be part of the Rural Pact Community Group on Women in Rural Areas** register https://ruralpact.rural-vision.europa.eu/groups/community-group-women-rural-areas_en



Branwen Miles



Blanca Casares



Funded by the European Union



**GRASS
CEILING**

www.grassceiling.eu

Thank you for your attention!



Funded by the European Union's Horizon Europe research and innovation programme under grant agreement No. 101083408. Views and opinions expressed are however those of the author(s) only and do not necessarily reflect those of the European Union or the European Research Executive Agency (REA). Neither the European Union nor the granting authority can be held responsible for them.