

GENDER EQUALITY IN EAFRD – SPAIN

SG Programación y Coordinación

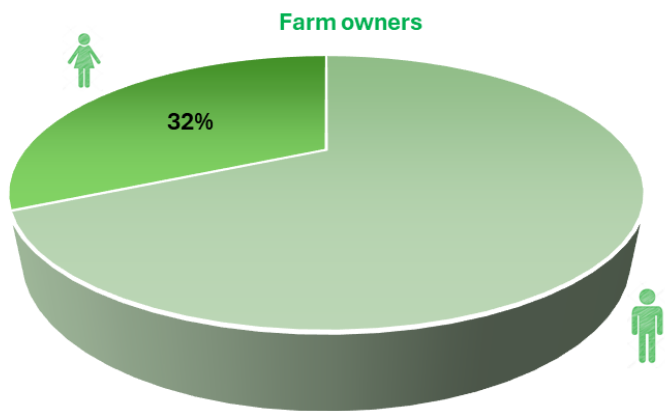
DG Desarrollo Rural, Innovación y Formación Agroalimentaria

MINISTRY OF AGRICULTURE, FISHERY AND FOOD



WOMEN'S PARTICIPATION IN RURAL AREAS AND IN THE AGRICULTURAL SECTOR

Farm structure



Source: agricultural census. 2020.INE.

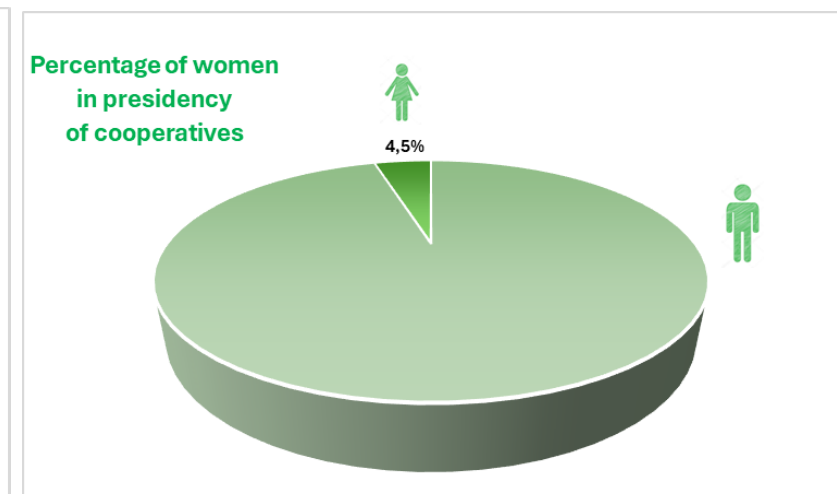
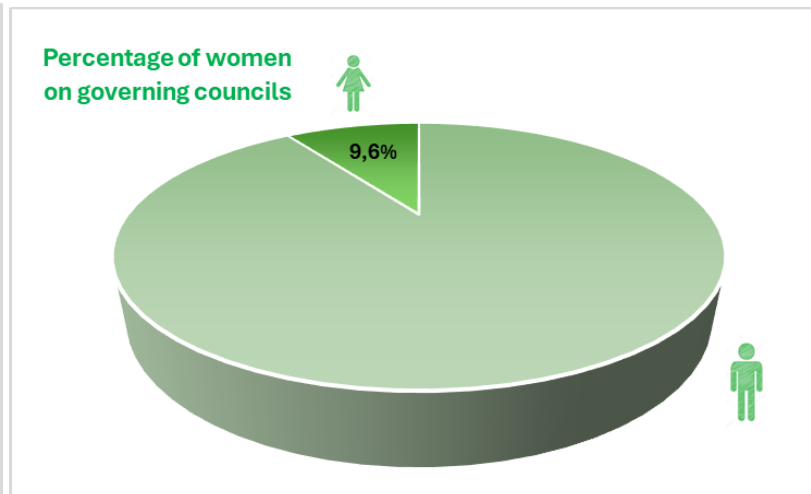
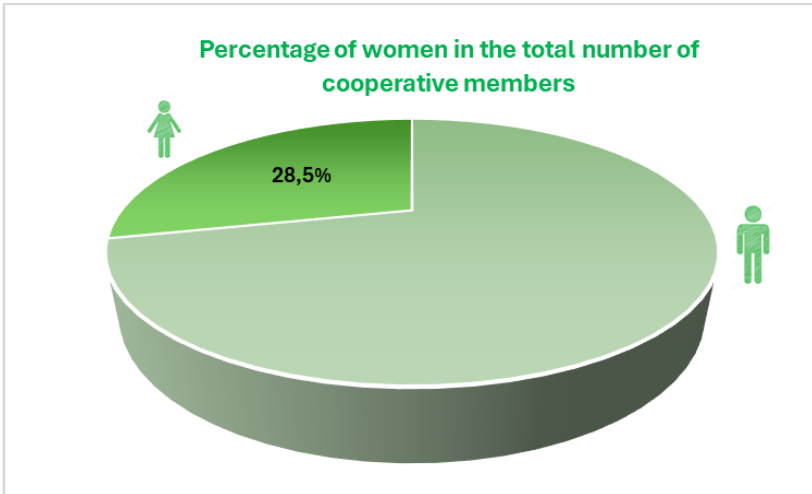
- **Less access of women to farm management:** only 29.92% of the total number of farm owners who are farm managers are women.
- **Smaller physical size of farms:** 17.9 ha of UAA on women's farms compared to 29.4 ha on men's farms.
- **Lower profitability:** standard production of women's farms is 37% lower than the spanish average.
- **Lower access to aid:** 37.40% of the beneficiaries of direct CAP aid are women. The average amount received is 37.91% lower than that received by men.

(FEGA data for fiscal year 2022).



WOMEN'S PARTICIPATION IN RURAL AREAS AND IN THE AGRICULTURAL SECTOR

Female representation in decision-making positions in cooperatives



Source: Socioeconomic Report of Agri-food Cooperatives of Spain.2022 (Data 2021)



WOMEN'S PARTICIPATION IN RURAL AREAS AND IN THE AGRICULTURAL SECTOR



Women living in rural areas face a double difficulty:

- Inequality in **access to jobs**.
- The **constraints of the territory** itself, in particular the limited availability of services.

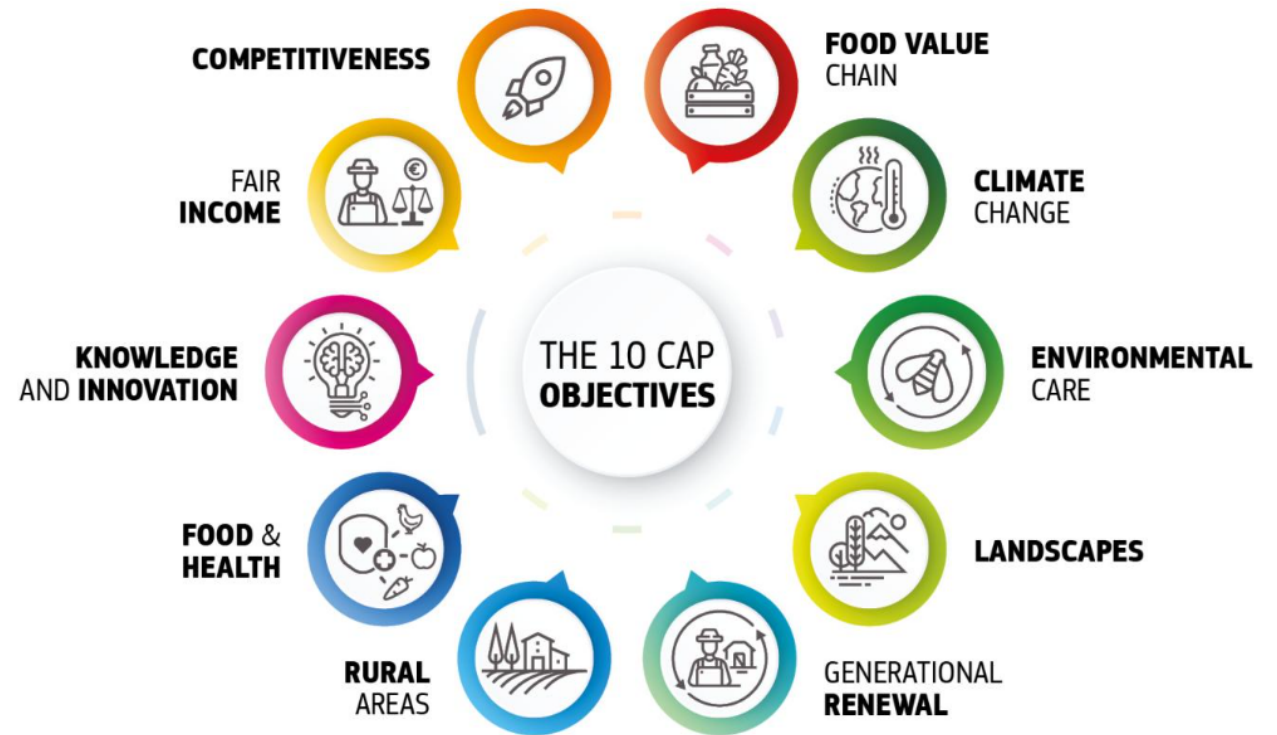
OPPORTUNITIES FOR RURAL WOMEN IN CAP 2023 - 2027

CAP Strategic Plan 2023 2027

Regulation 2021/2115

Inclusion of gender perspective in the CAP 2023-2027

SO8 (Art.6) “h) to promote employment, growth, **gender equality**, including the **participation of women in farming**, social inclusion and local development in rural areas, including the circular bio-economy and sustainable forestry”.





OPPORTUNITIES FOR RURAL WOMEN IN CAP 2023 - 2027

Possibility of designing specific CAP interventions aimed at women :

EAGF Interventions

- Increase of up to **15% of the unit amount** in the supplementary payment to young people when the newcomer is a woman.

EAFRD Interventions

- Specific eligibility conditions for women
- Increases in aid
- Differentiated Unit Amounts

OPPORTUNITIES FOR RURAL WOMEN IN EAFRD PROGRAMMING

Spanish CAP Strategic Plan 2023 2027

- There is no Managing Authority that designs specific interventions with a gender perspective.
- However, most of the interventions (35 / 45) will carry out actions with gender perspective within their EAFRD interventions of the CAP Strategic Plan.
- What's new with respect to 2014 2022:

Specific eligibility conditions for women

Differentiated aid intensities or unit amounts for women

Prioritization of women in the selection criteria for aid



OPPORTUNITIES FOR RURAL WOMEN IN EAFRD PROGRAMMING

INTERVENTION	IS IT AN INTERVENTION SPECIFICALLY DESIGNED TO ENHANCE THE GENDER PERSPECTIVE?		HOW IT IS APPLIED				NUMBER OF AUTONOMOUS COMMUNITIES
	YES	NO	SELECTION CRITERIA	DIFFERENTIATED UNIT AMOUNTS	SPECIFIC ELIGIBILITY CONDITIONS	ANOTHER WAY	
6841.1		X	X			X	9
6841.2		X	X			X	16
6842.2		X	X		X	X	10
6961.1		X	X	X	X	AND: Specific call	17
7119		X	X		X	X	14
7201		X	X		X	X	12
7202		X	X				8

OPPORTUNITIES FOR RURAL WOMEN IN EAFRD PROGRAMMING

Other forms of prioritization used by some Management Authorities:

- Prioritization with **specific scoring**
- Increased **aid intensity**
- Prioritization of farms with **shared or one woman ownership**
- Promote the **permanent hiring of women**
- Prioritization of **investments** in which the **jobs generated are in favor of women**
- **Specific calls:** Andalucía has made a specific call for the inclusion of young women in the sector (15M€)
- **LEADER:** demand **parity in LAGs'** decision-making bodies



GOBIERNO
DE ESPAÑA

MINISTERIO
DE AGRICULTURA, PESCA
Y ALIMENTACIÓN



Unión Europea
Fondo Europeo Agrícola
de Desarrollo Rural
Europa invierte en las zonas rurales

Thank you!

sgpc@mapa.es

SG Programación y Coordinación

DG Desarrollo Rural, Innovación y Formación Agroalimentaria

MINISTRY OF AGRICULTURE, FISHERY AND FOOD

