

European Policy Forum

24th March 2025
10.00 – 12.30 h CET



**Session on public policy initiatives
supporting rural women and
farmers**



Funded by the
European Union

GRASS CEILING – European Policy Forum

Welcome to a new session of the

European Policy Forum for women-led innovation in agriculture and rural areas

Timing	Agenda item
10.00 – 10.05	Welcome and introduction
10.05 – 10.20	GRASS CEILING project: findings and lessons learned
<i>*CFPR</i>	Driving Change: EU Research and Innovation by and for Rural Women
10.20 – 10.35	European Policy Forum for women-led innovation in agriculture & rural areas
10.35 – 11.25	Good national practices in the use of European funds for the support of women in agriculture and rural life 1) Gender Equality in Spain's CAP Strategic Plan 2) Spanish programme Rural Women's Challenge and the use of the European Social Fund 3) Mentorship programmes for rural women and/or Women's Farmer Capital Investment Scheme in Ireland 4) Women in Agriculture Taskforce in Scotland
11.25 – 11.35	Coffee break
11.35 – 12.20	Round-table How to systematise public support to women and opportunities to favour innovation ecosystem for women?
12.20 – 12.30	Closing



Funded by the European Union

GRASS CEILING – European Policy Forum

The European Policy Forum for women-led innovation in agriculture and rural areas



Blanca Casares



Serafín Pazos-Vidal



Sally Shortall, project coordinator



Charlene Lambert



Raquel Pastor



Carla Lostrangio



Miranda García

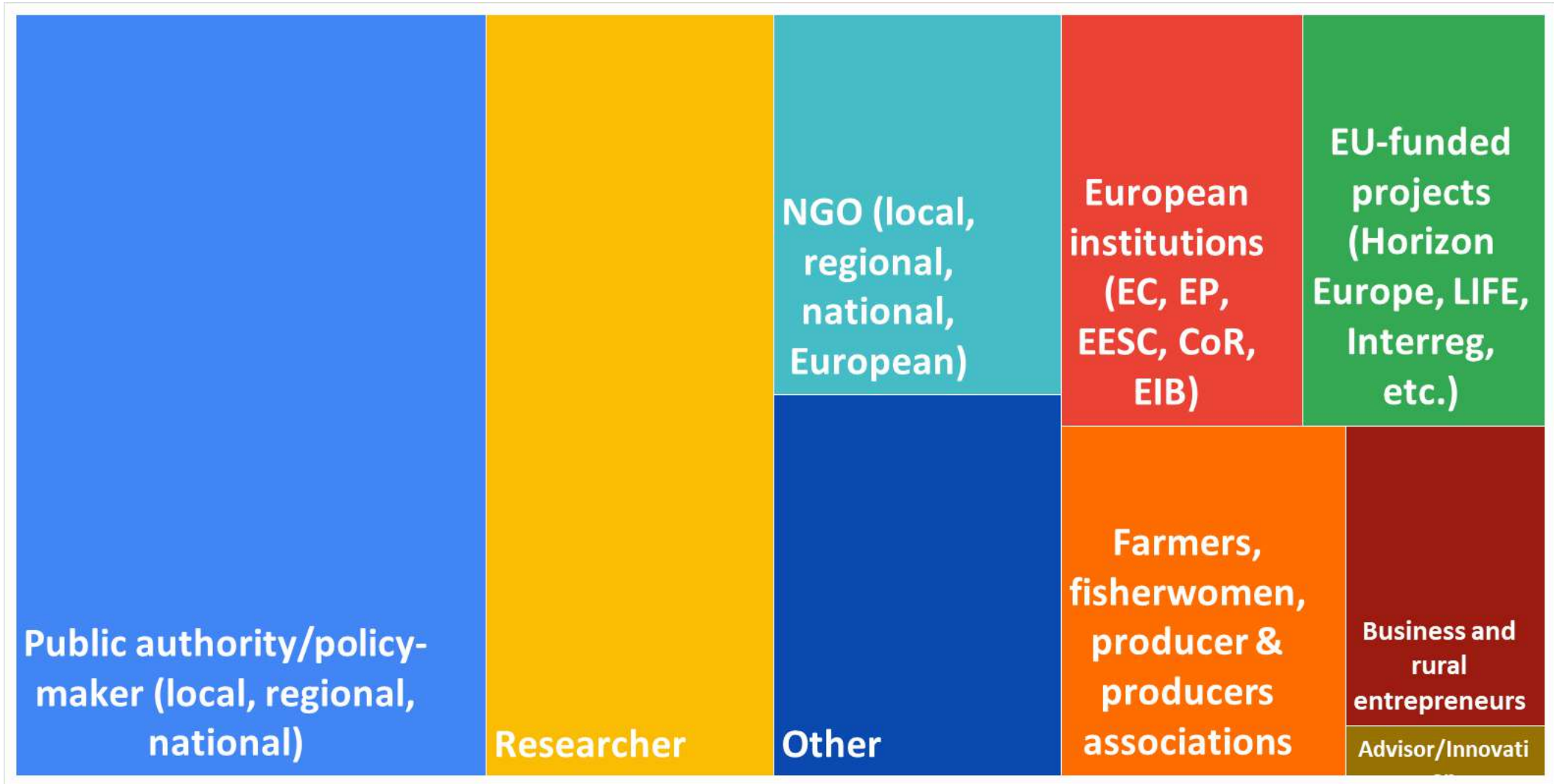


**Arianna Pasa, DG AGRI research
programme & policy officer**



Funded by the
European Union

Participants from 26 Member States + UK





GRASS CEILING

European Policy Forum

for women-led innovation in
agriculture and rural areas

24th March 2025

European Policy Forum for women-led innovation in agriculture and rural areas



ONLINE

- Bring a pan-European perspective
- Facilitate a space for knowledge exchange
- Discuss and validate project results
- Discuss and co-design recommendations and tools



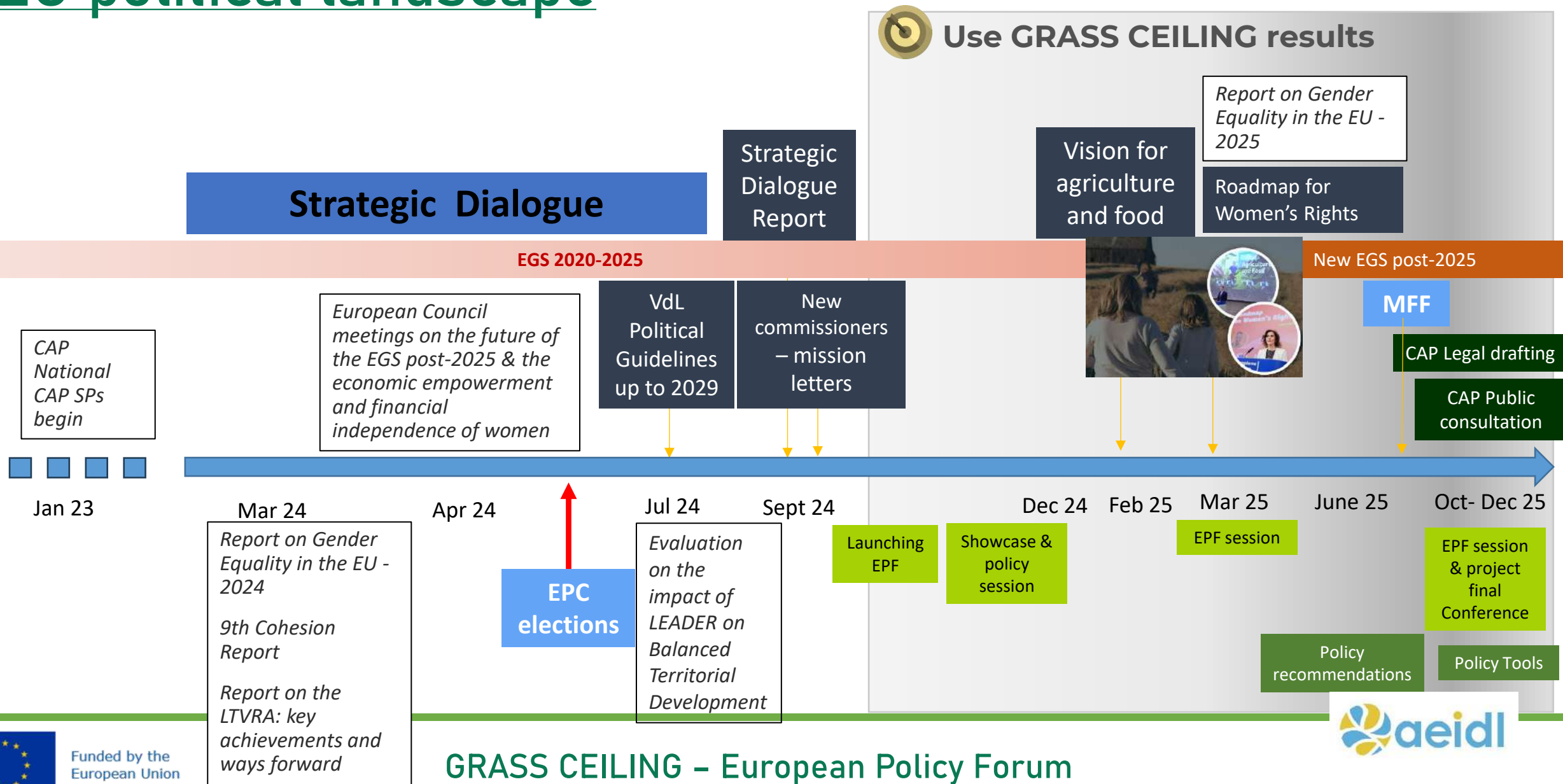
GRASS CEILING Living Labs



Funded by the European Union

GRASS CEILING – European Policy Forum

EU political landscape



Opportunities to support innovation ecosystems for women



- Articulation of the Vision and the Roadmap
- Post-2027 National Plans for EU Funds such as: ESF, ERDF, EARDF, EAGF, EMFAF
- In Common Agricultural Policy (CAP):
 - Amendment of strategic plans - since the CAP simplification regulation can be two per year; redesign of CAP interventions
- Transposition of EGS post 2025 into national strategies
- National/regional for
 - Brain drain/depopulation
 - Just transition
 - Smart rural
 - Generational renewal
- National social-climate plans (2025)





**GRASS
CEILING**

www.grassceiling.eu

Thank you!

for your attention
for being here today
for participating in our future activities

We hope you will be part of the EPF



Funded by the European Union's Horizon Europe research and innovation programme under grant agreement No. 101083408. Views and opinions expressed are however those of the author(s) only and do not necessarily reflect those of the European Union or the European Research Executive Agency (REA). Neither the European Union nor the granting authority can be held responsible for them.

Good national practices in the use of European funds for the support of women in agriculture and rural life



Isabel Aguilar Pastor, Deputy Director General of Programming and Coordination. General Directorate of Rural Development, Innovation & Agro-food Training. Ministry of Agriculture, Fisheries, and Food



Ana Lite Mateo, Deputy Assistant Director General. Deputy Directorate for Female Entrepreneurship, Gender Equality in Companies and Collective Bargaining. Institute of Women. Ministry of Equality



James Claffey, Deputy CEO of Irish Rural Link and Project Manager at CAP Network Ireland



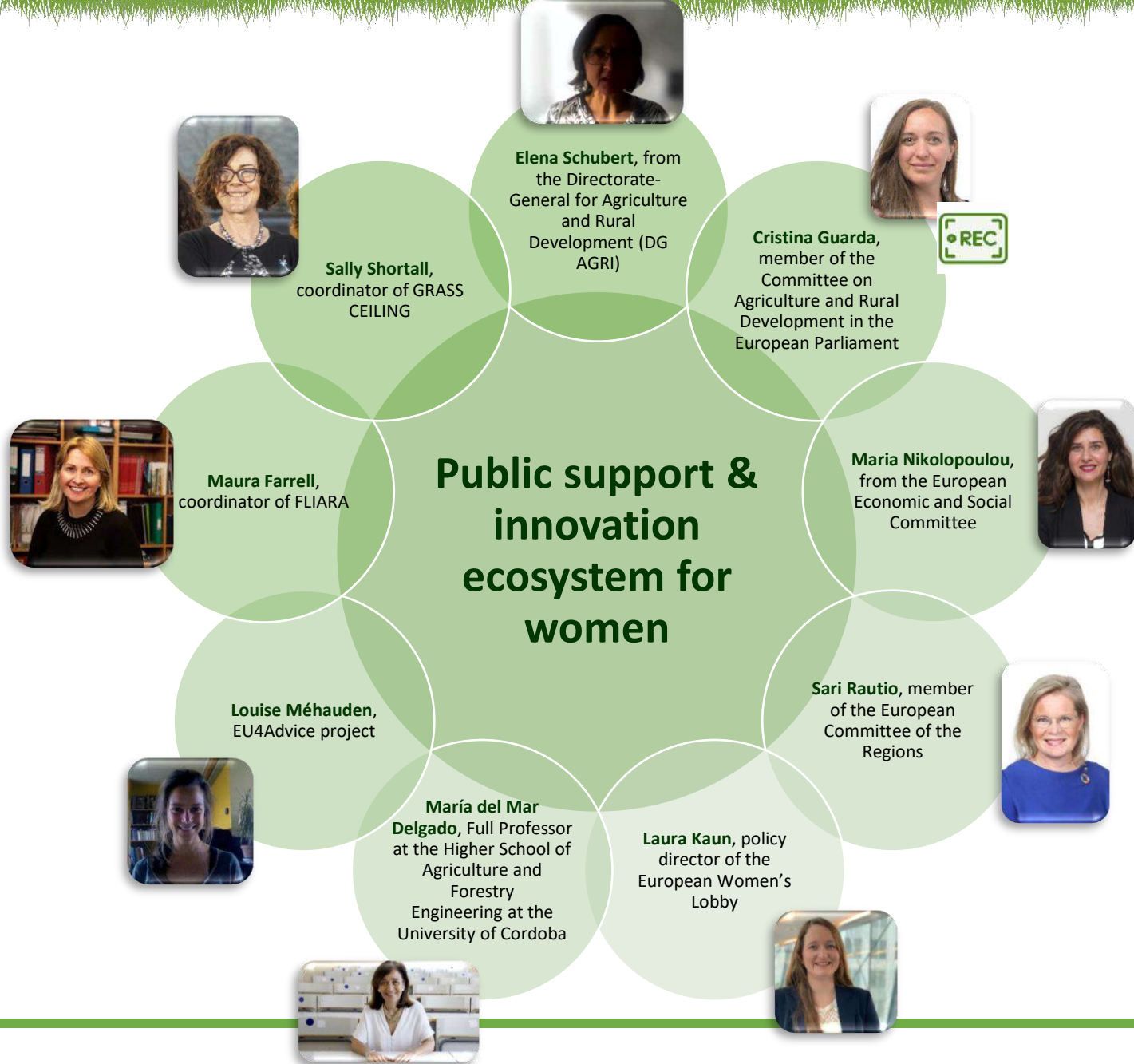
Fiona Leslie, Lead official Agriculture and Rural Economy, Agricultural Policy. Scottish Government



Funded by the European Union

Round-table

How to systematise public support to women and opportunities to favour innovation ecosystem for women?



Blanca Casares, European Association for Innovation in Local Development (AEIDL)

Next steps

- Become a member of the European Policy Forum

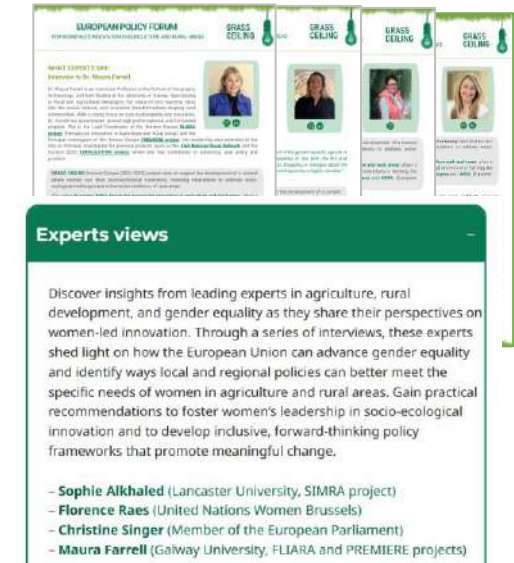


- A Highlights Report will be ready soon



- Make use of all European Policy Forum materials

- Be part of the Rural Pact Community Group on Women in Rural Areas



Experts views

Discover insights from leading experts in agriculture, rural development, and gender equality as they share their perspectives on women-led innovation. Through a series of interviews, these experts shed light on how the European Union can advance gender equality and identify ways local and regional policies can better meet the specific needs of women in agriculture and rural areas. Gain practical recommendations to foster women's leadership in socio-ecological innovation and to develop inclusive, forward-thinking policy frameworks that promote meaningful change.

- Sophie Alkhaled (Lancaster University, SIMRA project)
- Florence Raes (United Nations Women Brussels)
- Christine Singer (Member of the European Parliament)
- Maura Farrell (Galway University, FLIARA and PREMIERE projects)



GRASS CEILING

www.grassceiling.eu

Thank you!



Funded by the European Union's Horizon Europe research and innovation programme under grant agreement No. 101083408. Views and opinions expressed are however those of the author(s) only and do not necessarily reflect those of the European Union or the European Research Executive Agency (REA). Neither the European Union nor the granting authority can be held responsible for them.