



Follow us!



www.grassceiling.eu

GRASS CEILING Project Coordinator

Professor Sally Shortall
>> Newcastle University
Contact: info@grassceiling.eu



GRASS CEILING Project



@grassceiling_eu



@GRASSCEILING

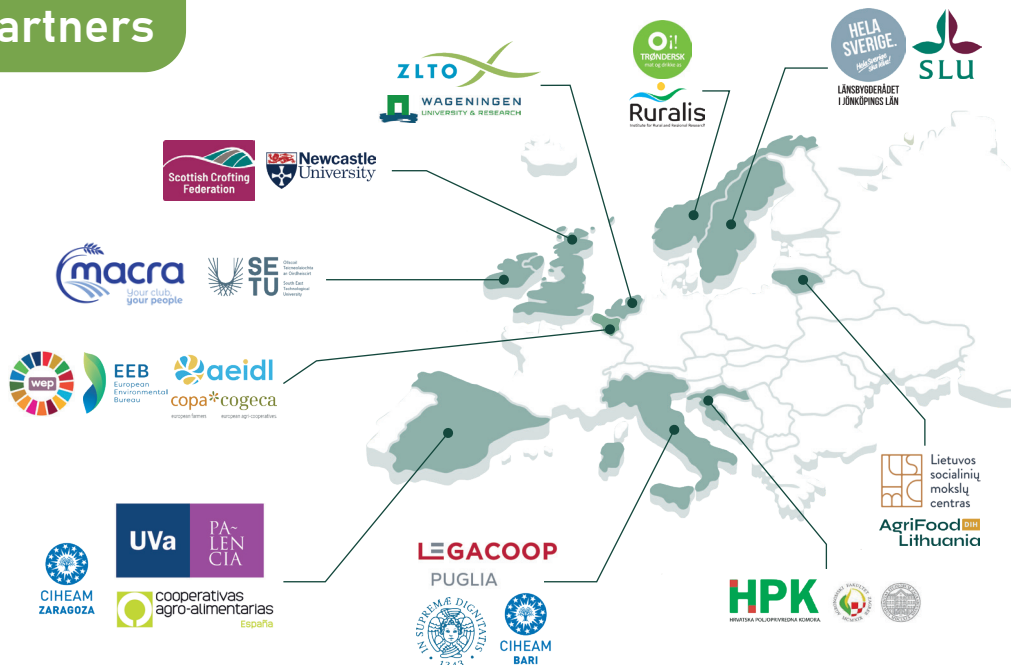


@GRASSCEILING



@GRASSCeiling_eu

Partners



Funded by
the European Union

Funded by the European Union. Views and opinions expressed are however those of the author(s) only and do not necessarily reflect those of the European Union or the European Research Executive Agency (REA). Neither the European Union nor the granting authority can be held responsible for them.



GRASS CEILING

Gender Equality in
Rural and Agricultural
Innovation Systems

Harvesting Results: The Legacy of the GRASS CEILING Project

GRASS CEILING (Gender Equality in Rural and Agricultural Innovation Systems) mission is to **empower rural women** and **increase the number of socio-ecological innovations** led by women across agriculture, the rural economy, and local communities. By doing so, GRASS CEILING supports the **UN Sustainable Development Goals on gender equality**, the **EU Gender Equality Strategy**, and contributes to the objectives of the **European Green Deal**, the **Farm to Fork Strategy**, the **Long-Term Vision for Rural Areas**, and the **European Pillar of Social Rights**.

Throughout its three years, GRASS CEILING has created spaces for women to **lead sustainable change in rural areas**—working through **nine Living Labs** established across diverse European contexts, from mountain regions to coastal and remote rural communities. These Labs have enabled women to co-create innovative solutions that respond to local needs while strengthening their skills, confidence, and leadership.

By combining **data analysis, policy benchmarking, training, and policy co-creation**, GRASS CEILING has developed practical recommendations and tools to make innovation systems more inclusive. The project has also fostered **European and regional networks** connecting women innovators, researchers, policymakers, and funders, laying the groundwork for lasting gender equality in rural innovation systems.

Together, these efforts ensure that women not only participate in but **shape the future of sustainable rural Europe** through creativity, collaboration, and innovation.

29 > PARTNERS COVERING 9 COUNTRIES

9 > LIVING LABS

72 > RURAL WOMEN INNOVATORS

+1K > WOMEN TRAINED

Project Outputs

Through collaboration, research, and co-creation, **GRASS CEILING** has helped women take an active role in shaping sustainable transitions within their communities. The project pursued its objectives by:

1

Establishing 9 Living Labs as spaces for co-creating knowledge and innovation.

2

Developing tools and recommendations to improve policies that impact on agricultural and rural women innovators.

3

Analysing the position of women in European agriculture and rural areas to build a solid evidence base for action.

4

Co-creating knowledge on gender norms and the drivers/enablers of women-led innovation.



Local representation in 9 European countries



54 video journeys of rural women innovators



29 reports and datasets



5 events



3 scientific articles



2 awards



Policy tools repository

Online Academy >> MOOC

